

Geology Digimap

January 16th 2013

**Higher Education Network
Annual Meeting**

Geology Digimap: What is it?

Geology Roam[®]

Home > Geology Roam

TASK MENU

[Search](#)

[Overview Map](#)

[Map Content Control](#)

clear/select all layers

Bedrock

- Barnby Member (BNBM)
- Barnstone Member (BNT)
- Blue Anchor Formation (BAN)
- Branscombe Mudstone Formation (BCMU)
- Cotham Member (CTM)
- Westbury Formation (WBY)

Superficial Deposits

Artificial Ground

- Made Ground (Undivided) (MGR)
- Worked Ground (Undivided) (WGR)

Linear Features

- Fault
- Normal fault, inferred

[Active Legend \(BETA\)](#)

[Map Information](#)


[My Maps](#)

[Geological Photos](#)

© University of Edinburgh.

Geology Photo Details

Great Langdale.



British Geological Survey. © NERC. All rights reserved.

Grid Reference: NY29000530
Easting: 329000, **Northing:** 505300

Description: View of Langdale Pikes from Side Pike. The pale-coloured scree on the north side of the glaciated valley are derived from the Airy's Bridge Formation - a succession of welded, rhyodacitic ignimbrites. Volcaniclastic sandstone and breccia (Seathwaite Fells Formation) cap the Langdale Pikes.

EDINA[®]

Us | Log-Out

HINTS & TIPS

Free Wolds

Wolds

Terms of Use

Geology Digimap: What's New?

- **Geolo**

- Add
- the
- Imp
- Mov
- Hist



els to
ur GIS
s; OS,

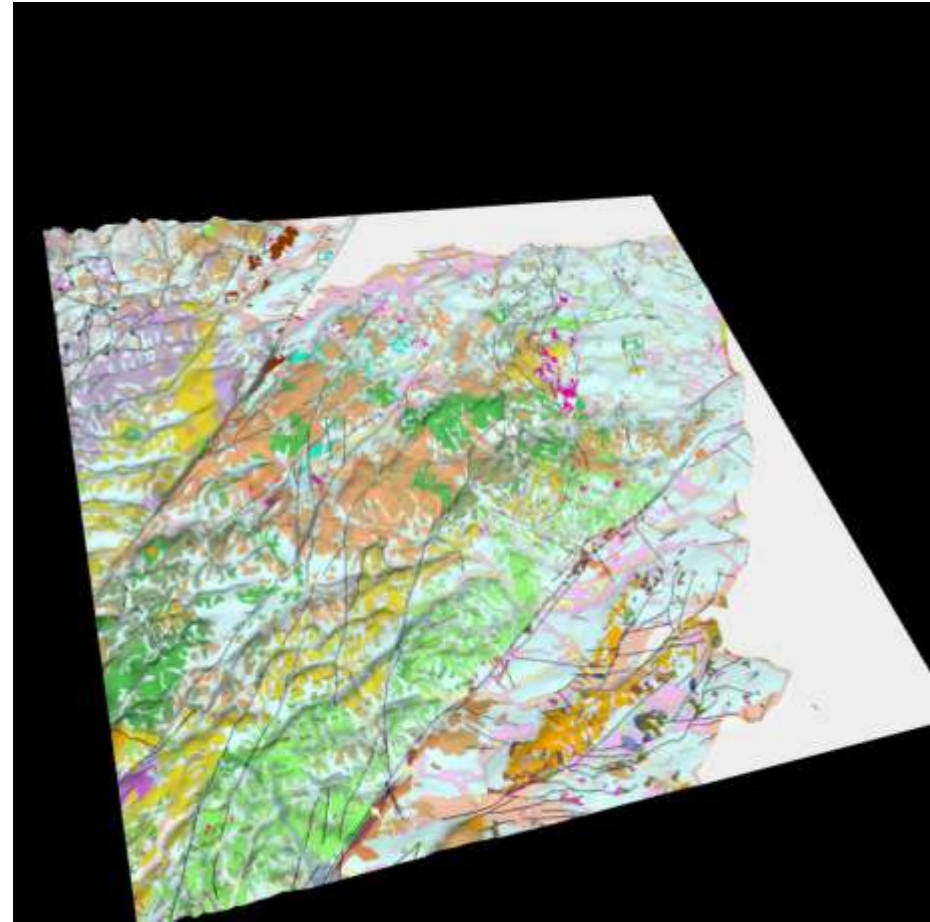
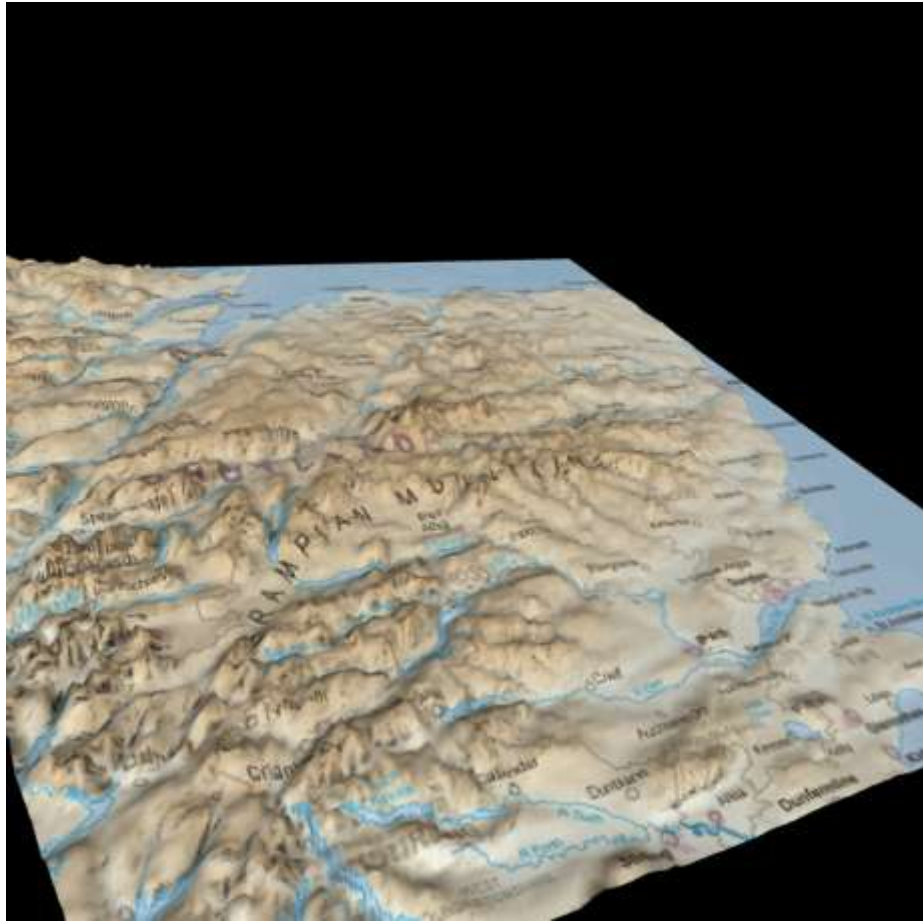
COMING SOON!

Geology Digimap: Features in Development

- **Geology Roam Upgrades**
 - Cached maps without superficial deposits
 - GeoScenic Images and Borehole data on the maps
 - Age ordered Active Legends
 - Legends on PDF maps
- **New Geology Download**
 - Inline with the new Data Download in Digimap OS

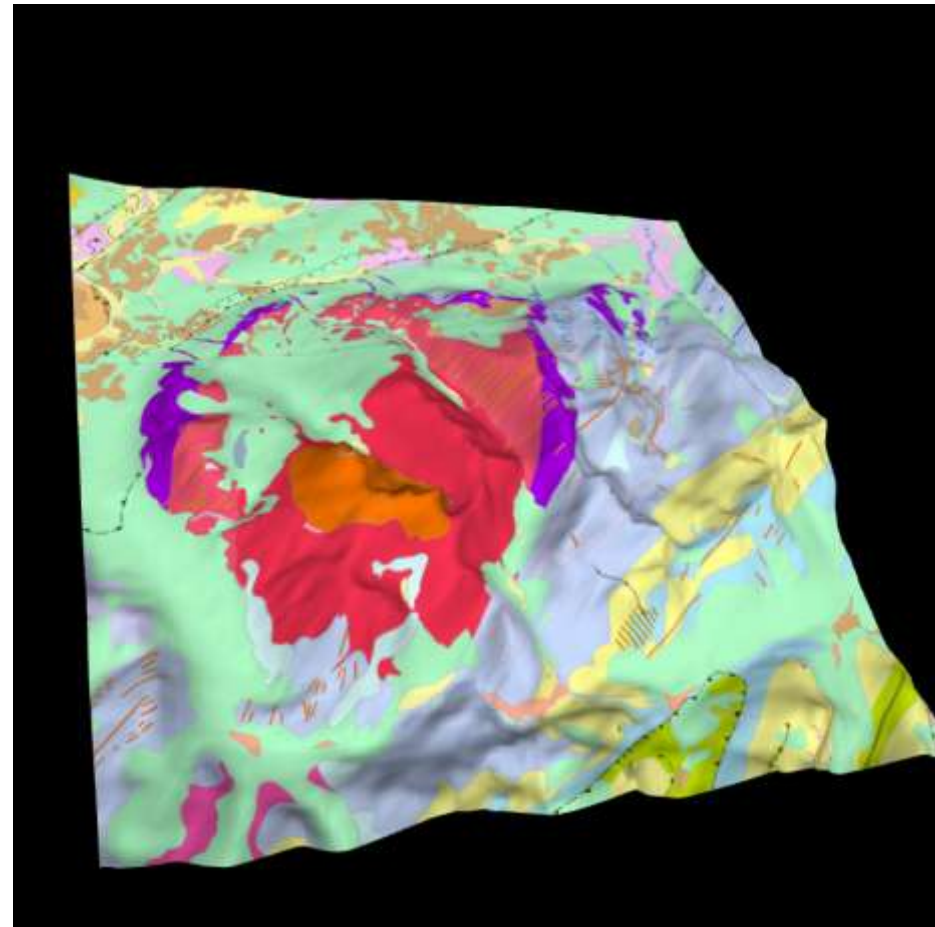
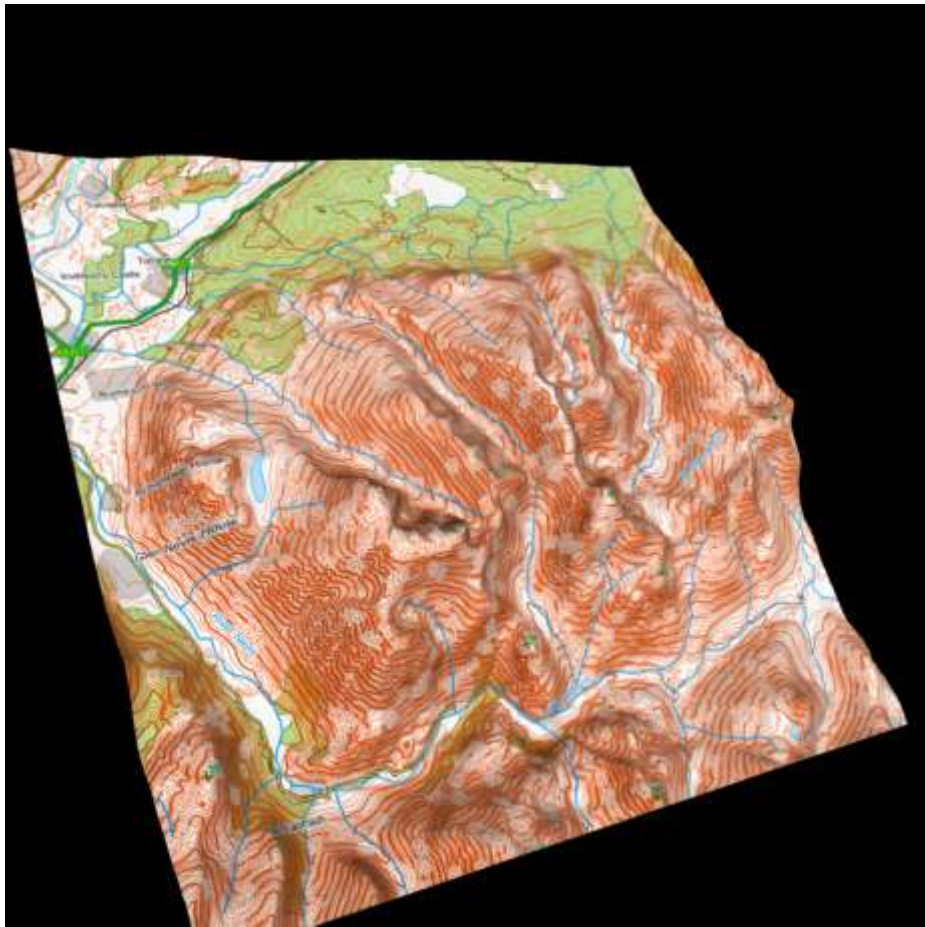
COMING not quite so **SOON**

Geology Digimap: Future Developments



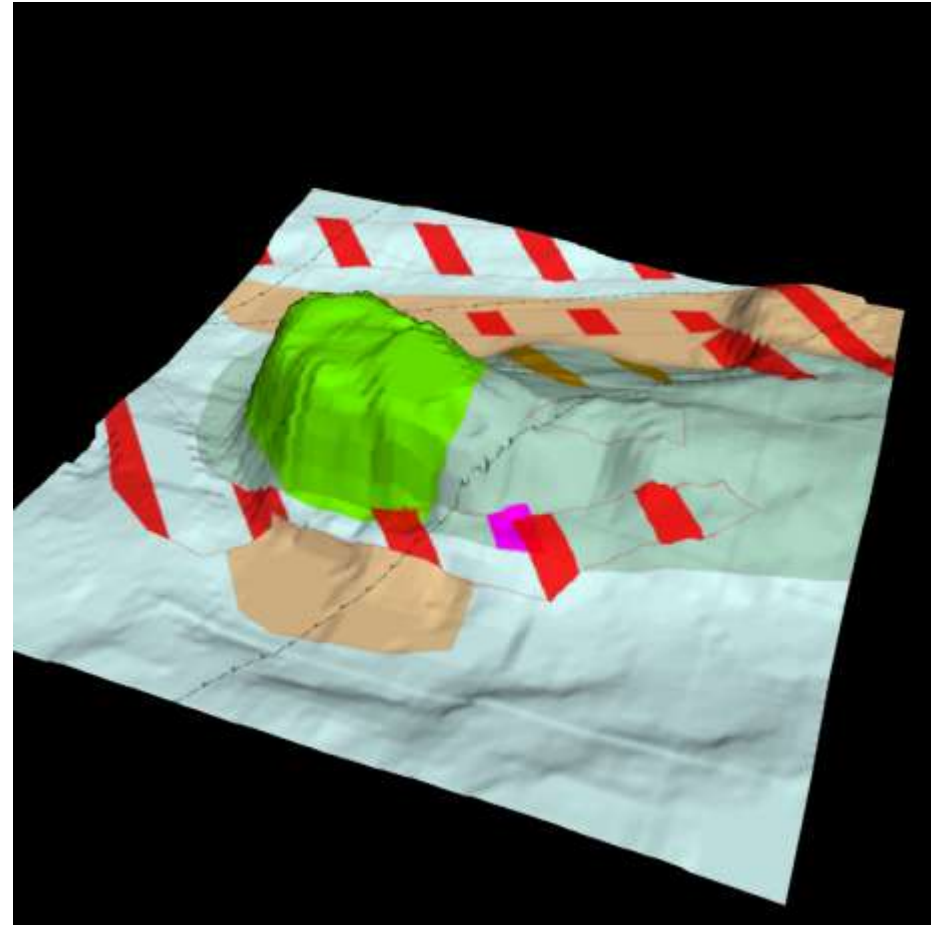
- View 3D Visualisations in Geology Roam

Geology Digimap: Future Developments



- Export images for documents

Geology Digimap: Future Developments



- Created using HTML5 Canvas, WebGL, JavaScript & POV-Ray

Something Completely Different



Fieldtrip GB



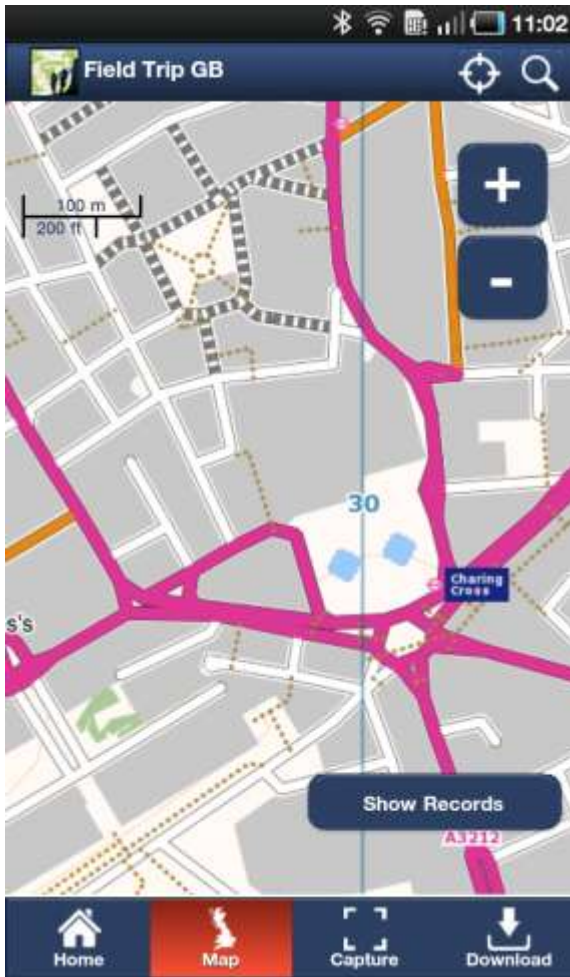
<http://fieldtripgb.blogs.edina.ac.uk/>

- Quality cartography for both rural and urban environs
- Save maps to a device
- Capture data
- Custom data capture forms

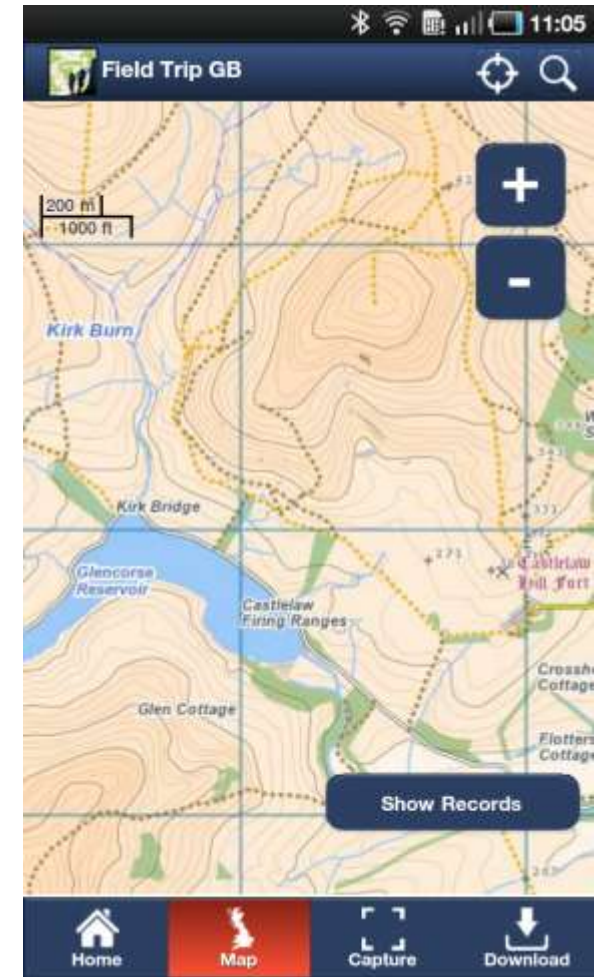
Fieldtrip GB: Home Screen



Fieldtrip GB: Quality Cartography



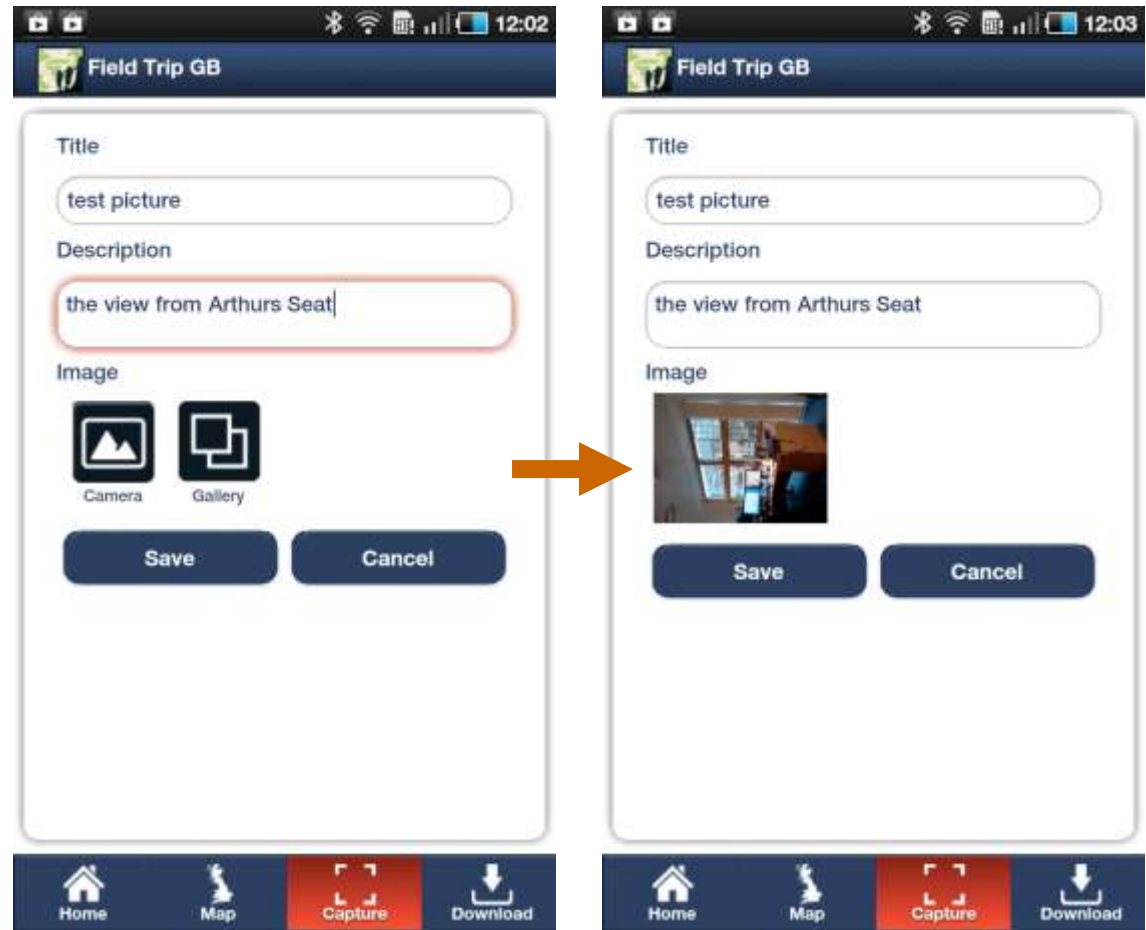
- Maps based on OS Opendata and OSM data.
- We hope to release an HE/FE version with 1:50k & 1:25k Raster Maps and possibly MasterMap



Fieldtrip GB: Data Capture

Predefined basic capture forms shipped with app include:

- Text
- Image
- Audio
- GPS track log



Basic Image Capture

Fieldtrip GB: Authoring tool for custom forms

The screenshot displays the FieldTrip GB Authoring tool interface, which is divided into three main sections:

- Element Selector:** Located on the left, it lists various form elements: Text, Range, Text Area, Multiple Choice Selector (highlighted with a red circle), Single Choice Selector, Drop down Selector, Image Capture, and Audio Capture. Below the list, it provides a download link for the app on Android and Apple.
- Form Editor:** The central workspace shows a form titled "Geology" with an "Edit" button and a "Not synchronized" warning. A text input field with a "Placeholder" is visible. A red box with the text "Drag elements into the form generator" is overlaid on the editor, with an arrow pointing from the "Multiple Choice Selector" in the Element Selector to this box.
- Element Details:** A panel on the right titled "Options" allows for configuring the selected element. It includes fields for "Title", "Required" (set to "Yes"), "Placeholder", and "Max length" (set to "10"). A red box with the text "Specify the criteria for the element" is overlaid on this panel. At the bottom of the panel are "Done" and "Preview" buttons.

Navigation and utility elements include a top menu bar with "FieldTrip GB Author", "Home", "Create new form", "Record Viewer", "Editors Gallery", "My Editors", and "Contact". A secondary menu below it includes "Edit menu", "Mode", "Rotation", "Size screen", and "Actions".

Mock form for collecting Geology field notes:

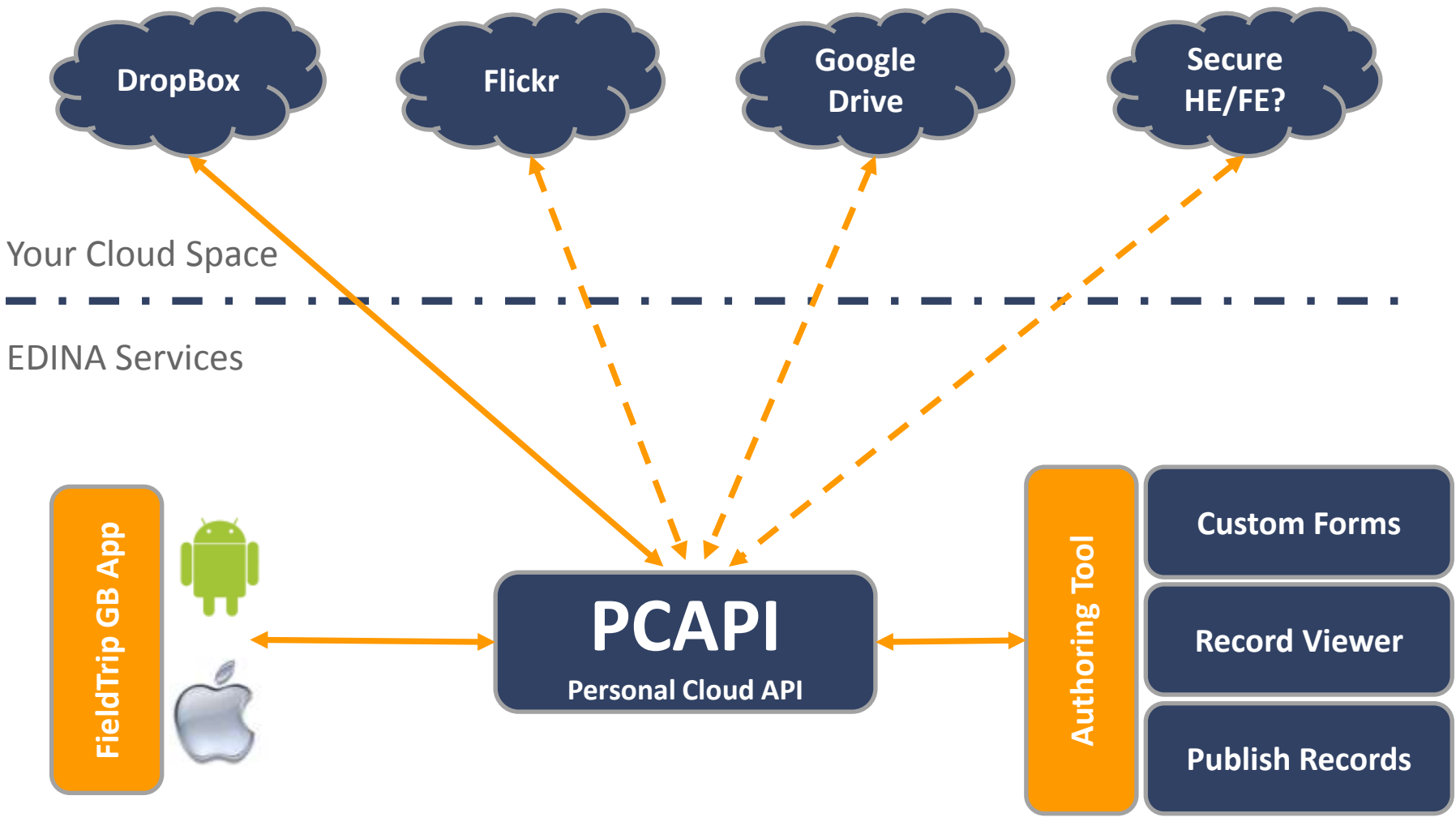
- Set fields to be optional or mandatory
- Promotes consistent data collection
- View and edit records using the Authoring Tool
- Export data as GPX, Shape or KML using the Authoring Tool
- Upload to Digimap Roam

The screenshot shows the 'Field Trip GB' mobile application interface. At the top, there is a status bar with icons for Bluetooth, Wi-Fi, cellular signal, and battery, along with the time 09:36. Below the status bar is a dark blue header with the app's logo and name 'Field Trip GB'. The main content area is a white form with the following fields and controls:

- Title:** A text input field with a 'Placeholder' label.
- Rock Type:** A dropdown menu with a checkmark icon on the right.
- Rock Description:** A text input field with a 'Placeholder' label.
- Dip:** A slider control with a 'Placeh' label and a circular knob.
- Strike:** A slider control with a 'Placeh' label and a circular knob.
- Note Book Ref:** A text input field with a 'Placeholder' label.
- Photo:** Two icons: 'Camera' (a camera icon) and 'Gallery' (a gallery icon).
- Buttons:** Two buttons at the bottom: 'Save' and 'Cancel'.

At the bottom of the screen is a dark blue navigation bar with four icons: 'Home' (a house icon), 'Map' (a map icon), 'Capture' (a camera icon, highlighted in red), and 'Download' (a download icon).

Fieldtrip GB: How it works



Fieldtrip GB: Beyond Versions 1

We need feedback on **Version 1**

What we think would be useful:

- OS licensed data from Digimap
- Geology base maps with a transparency slider
- Compass clinometer
- Augmented reality

What would you add to enhance teaching and learning?

- Email: edina@ed.ac.uk Subject: Fieldtrip GB

Questions?